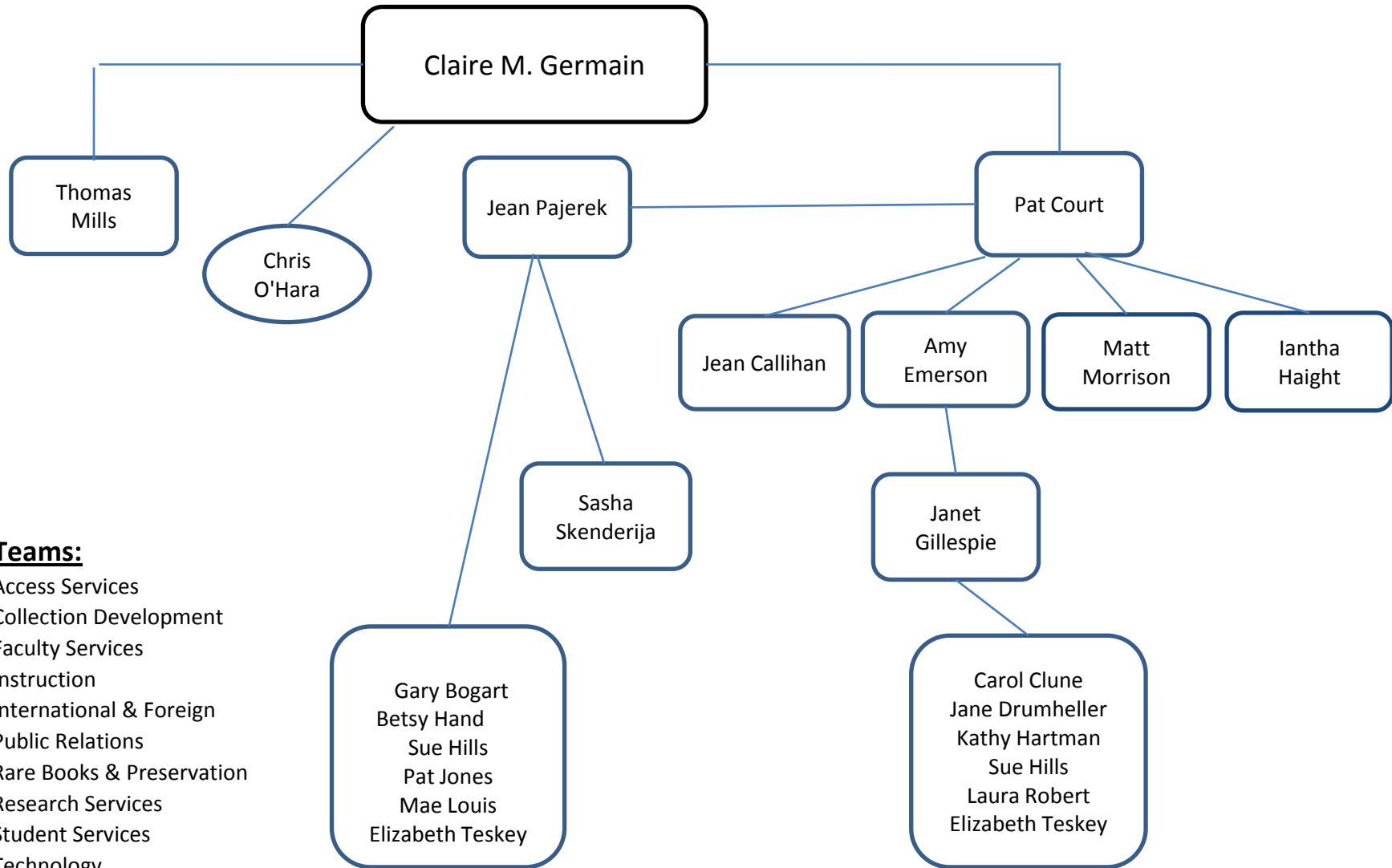


Cornell Law Library Organizational Chart, October 2009



Teams:

- Access Services
- Collection Development
- Faculty Services
- Instruction
- International & Foreign
- Public Relations
- Rare Books & Preservation
- Research Services
- Student Services
- Technology
- Technical Services / Information Management
- Web

Access Services Team

- Carol Clune
- Jane Drumheller
- Amy Emerson
- Janet Gillespie*
- Kathy Hartman
- Sue Hills
- Laura Robert
- Elizabeth Teskey

Instruction Team

- Jean Callihan
- Pat Court*
- Amy Emerson
- Iantha Haight
- Thomas Mills
- Matt Morrison

Rare Books and Preservation Team

- Amy Emerson
- Janet Gillespie
- Betsy Hand
- Thomas Mills*

Technology Team

- Pat Court
- Iantha Haight
- Gail Howser
- Jean Pajerek*

Collection Development Team

- Jean Callihan
- Pat Court
- Pat Jones
- Thomas Mills *
- Elizabeth Teskey

International and Foreign Team

- Jean Callihan
- Amy Emerson
- Claire Germain
- Thomas Mills*

Research Services Team

- Jean Callihan*
- Pat Court
- Amy Emerson
- Iantha Haight
- Janet Gillespie
- Thomas Mills
- Matt Morrison

Technical Services/Info. Mgmt. Team

- Gary Bogart
- Betsy Hand
- Kathy Hartman
- Sue Hills
- Pat Jones
- Mae Louis
- Jean Pajerek*
- Elizabeth Teskey

Faculty Services Team

- Jean Callihan
- Pat Court*
- Amy Emerson
- Iantha Haight
- Thomas Mills
- Matt Morrison

Public Relations Team

- Carol Clune
- Amy Emerson*
- Janet Gillespie*
- Chris O'Hara
- Elizabeth Teskey

Student Services Team

- Jean Callihan
- Janet Gillespie
- Matt Morrison*

Web Team

- Jean Callihan*
- Carol Clune
- Matt Morrison
- Jean Pajerek
- Sasha Skenderija*

* Denotes Team Leader(s)